



FOR SALE!

BAUER BG 20 H ROTARY DRILLING RIG

> 1 BAUER BG 20 H Rotary drilling rig

Year 2010

On carrier BT60

Undercarriage UW60

CAT Diesel engine 205 kW

About 14.300 working hours

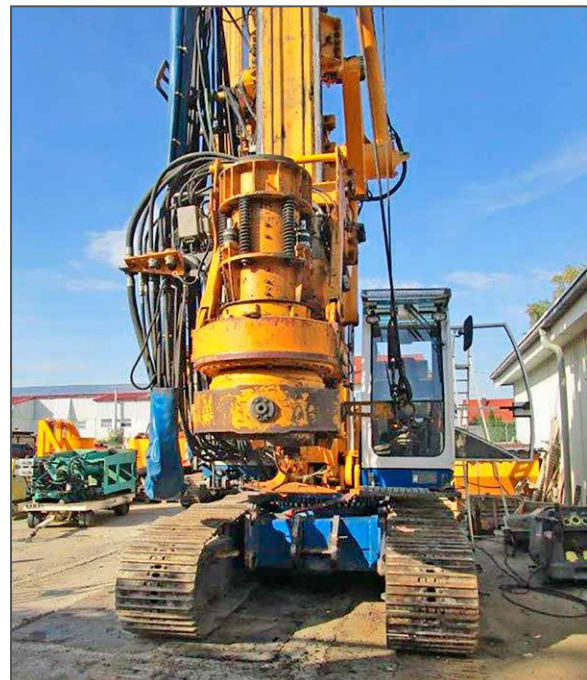
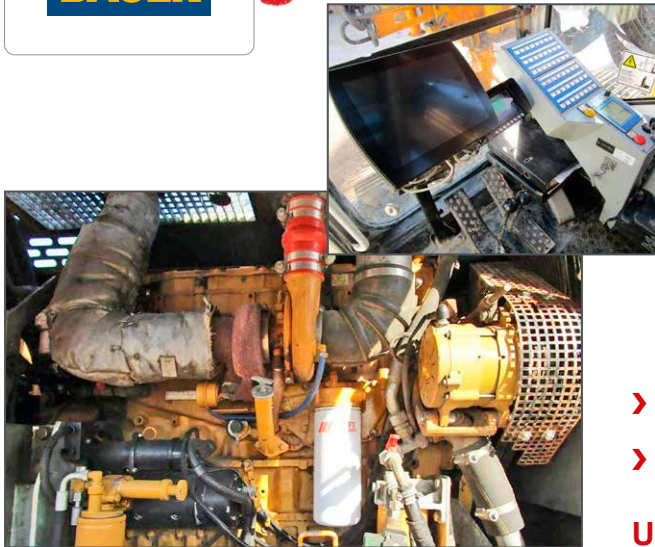
With Options included

- Swivel for auxiliary rope
- Air condition
- Central lubrication unit
- B-Tronic
- Kelly module
- CFA module
- FDP module
- SCM module
- RSV module

> 1 BAUER Rotary drive KDK 200 S

> 1 BAUER Kelly bar BK20 368 3-24 S

Used Equipment, good working order



Prior to Sales all machines will be **checked and tested** according to the **manufacturer's** instructions.

USED FOUNDATION EQUIPMENT